

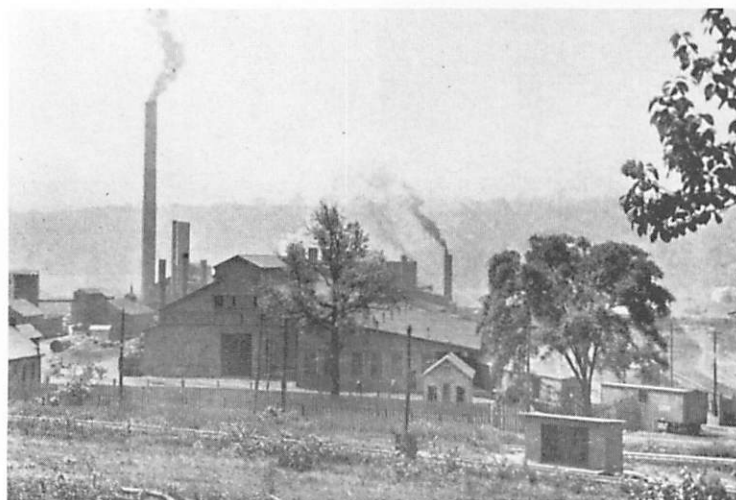
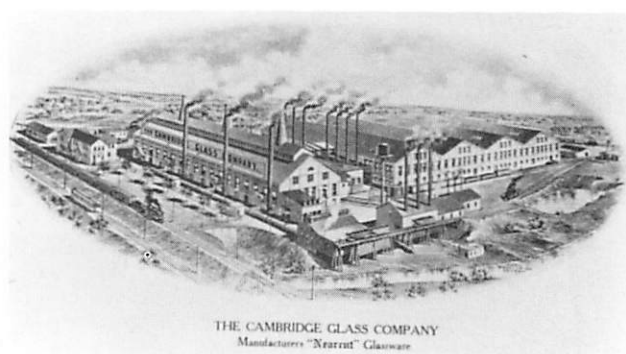
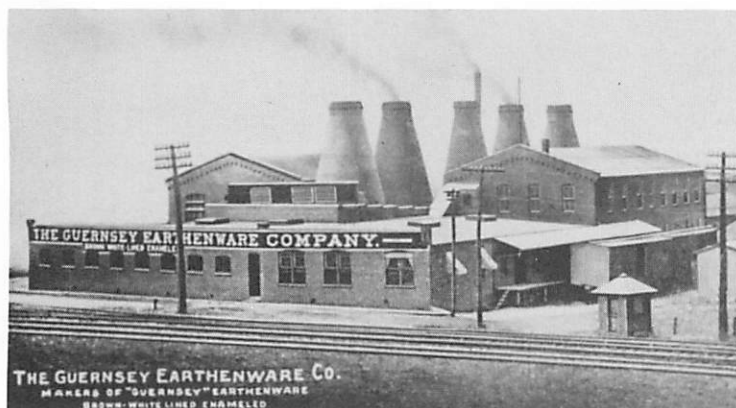
## Guernsey County Industries

Three of the largest of the early industries of the county were the mills, the pottery, and the glass house.

The fame of Cambridge Glass and Guernsey Earthenware extended far beyond Guernsey County. The quality of their products was nationally recognized, and both companies won prizes at expositions held in the early part of this century.

The iron and steel industry was also extremely important to this area in the early part of this century. Furnishing employment to many hundreds of residents, you can still hear people talk of the days when they worked at the mill.

In more recent years, the plastics and electronics industries have become very prominent in Guernsey County employing thousands of persons in nearly a score of plants. The establishment of the Cambridge State Hospital (formerly the army's Fletcher General Hospital of World War II days) has also furnished employment to hundreds of local residents.



American Sheet and Iron Plate Co., Cambridge Works  
*This page courtesy of Packaging Materials, Inc.*



Cambridge State Hospital  
 Star Plastics Incorporated